

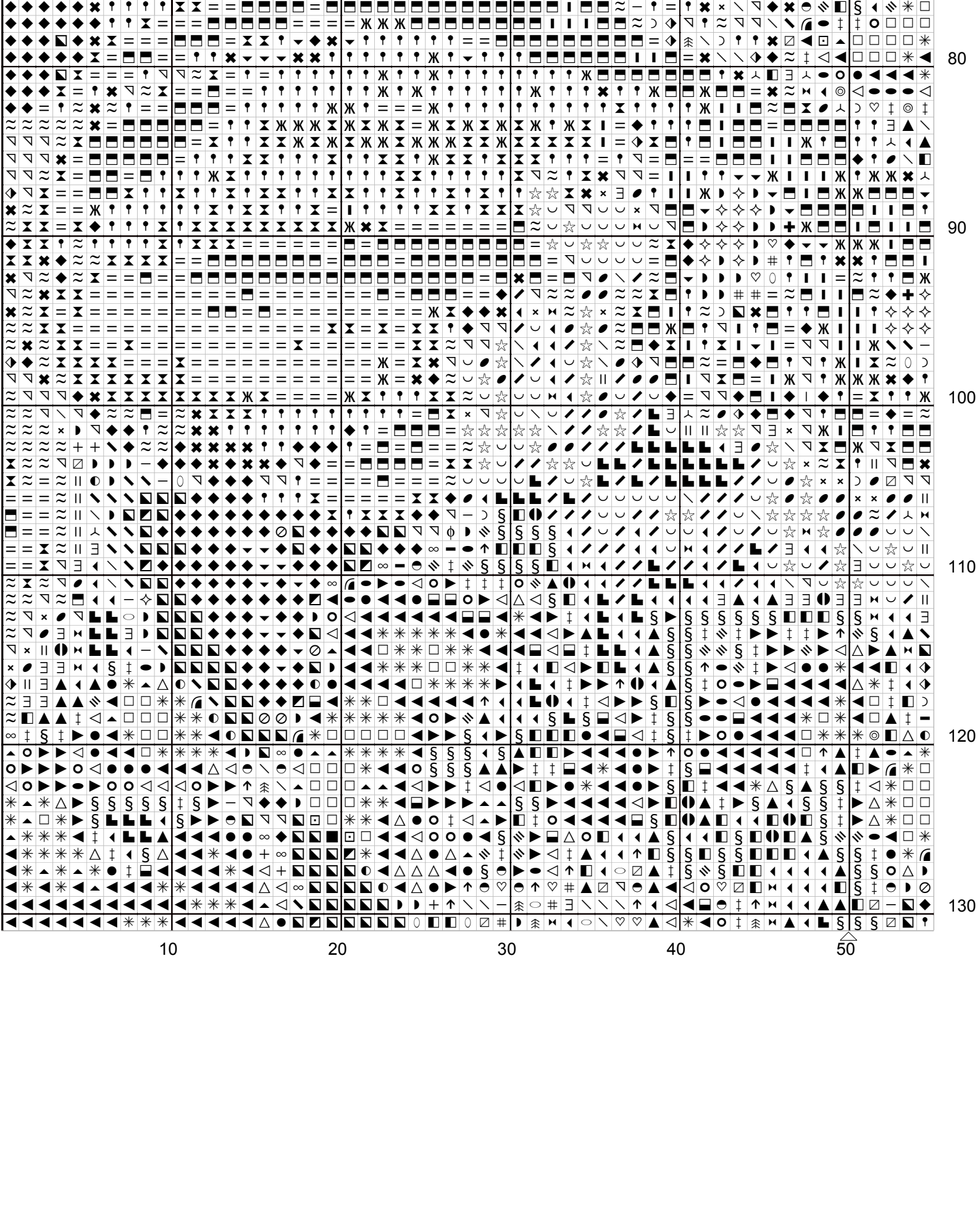
10

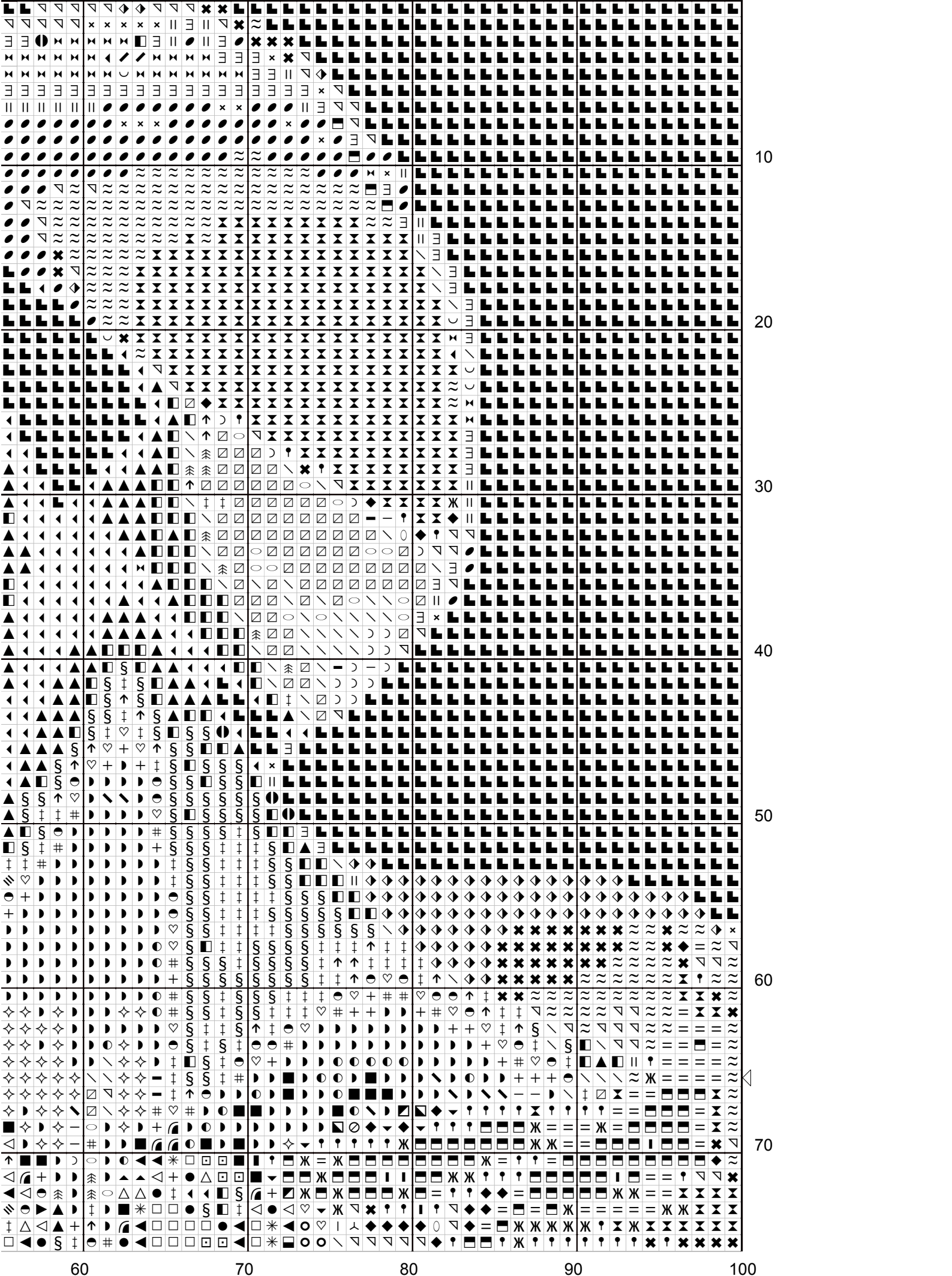
20

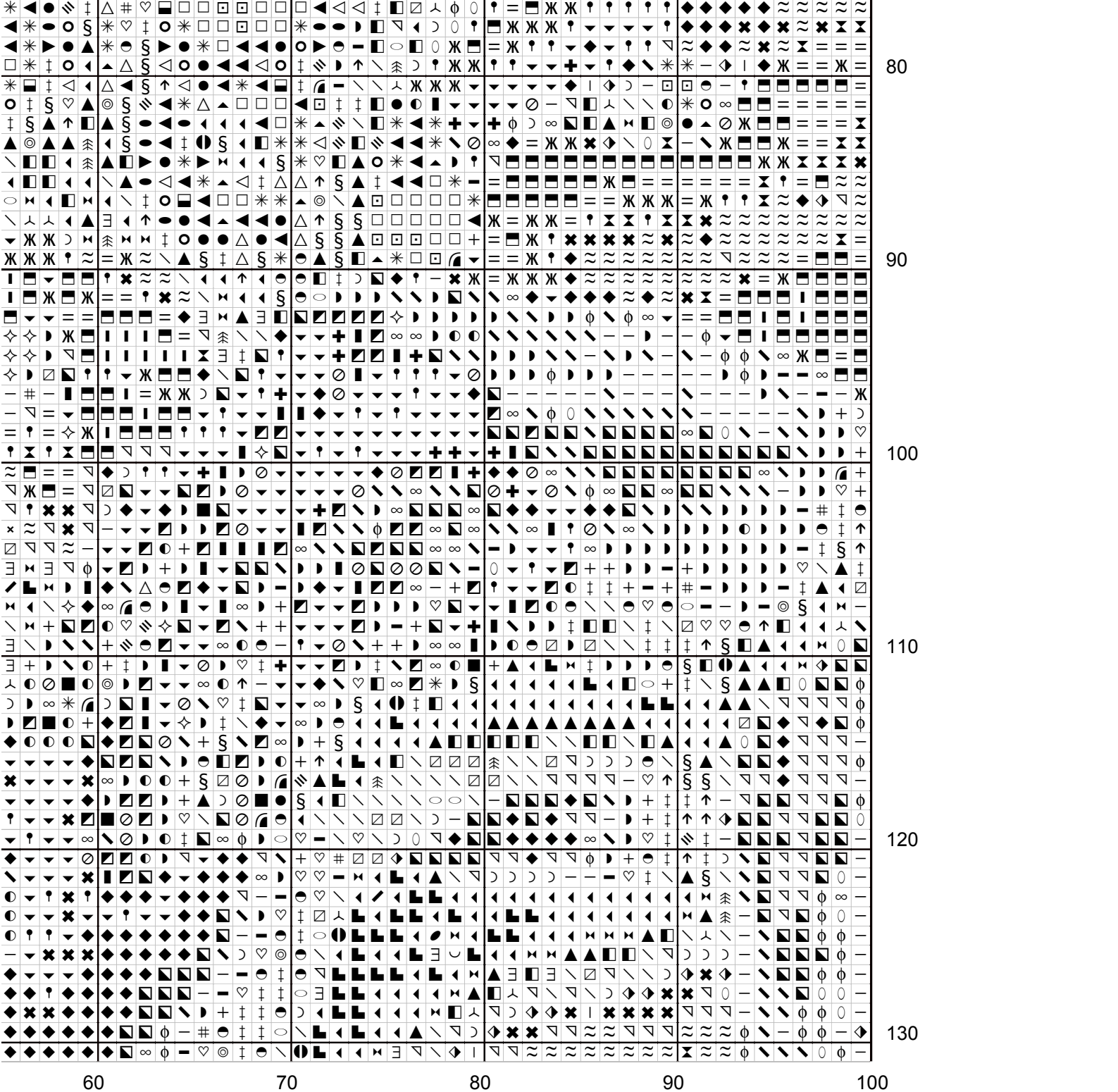
30

40

50







Lady with Poppies

Author:	Rania Khan
Grid Size:	100W x 131H
Cloth Count:	14
Fabric:	Aida, 14 count
Design Area:	7.14" W x 9.36" H (100 x 131 stitches)

Legend: DMC Stranded Cotton

∞	152 md lt shell pink	⦿	434 brown - lt	◆	842 beige brown - vy lt		3727 antique mauve - lt
●	154 grape - vy lt	○	435 brown - vy lt	▲	898 coffee brown - vy dk		3740 antique violet - dk
◎	221 shell pink - vy dk	◊	437 tan - lt	◀	900 burnt orange - dk	■	3770 tawny - vy lt
φ	223 shell pink - lt	●	451 shell gray - dk	▶	918 red copper - dk	■	3771 terra cotta - ul vy lt
⊙	224 shell pink - vy lt	●	498 christmas red - dk	◁	919 red copper	\	3772 desert sand - vy dk
♡	301 mahogany - md	Ж	543 beige brown - ul vy lt	△	920 copper - md	≡	3777 terra cotta - vy dk
○	304 christmas red - md	□	606 burnt orange-red	◄	938 coffee brown - ul dk	↘	3778 terra cotta - lt
■	310 black	▣	608 burnt orange	▲	946 burnt orange - md	≈	3782 mocha brown - lt
☆	317 pewter gray	▤	632 desert sand - ul vy dk	▼	950 desert sand - lt	∧	3790 beige gray - ul dk
●	349 coral - dk	■	721 orange spice - md	⊗	3024 brown gray - vy lt	↗	3799 pewter gray - vy dk
▒	350 coral - md	▣	738 tan - vy lt	↔	3031 mocha brown - vy dk	*	3801 christmas red - lt
○	351 coral	▣	758 terra cotta - vy lt	†	3033 mocha brown - vy lt	#	3826 golden brown
●	355 terra cotta - dk	☐	779 cocoa - dk	×	3041 antique violet - md	+	3830 terra cotta
▶	356 terra cotta - md	■	801 coffee brown - dk	✖	3046 yellow beige - md	+	3856 mahogany - ul vy lt
↑	400 mahogany - dk	▣	817 coral red - vy dk	—	3064 desert sand	§	3857 rosewood - dk
↔	402 mahogany - vy lt	▣	822 beige gray - lt	=	3072 beaver gray - vy lt	‡	3858 rosewood - md
⌋	407 desert sand - dk	◊	841 beige brown - lt	—	3722 shell pink - md	∇	3864 mocha beige - lt
∪	413 pewter gray - dk						